



مدرسة البحث العلمي
School of Research Science

Year 6

Revision Pack

January 2021

Name: _____

Class: _____

Revision
#smashed it

Living Things and Their Habitats

1. Think of **four** animals for each classification in the table below:

Wings	No Wings
Accept any animals that have wings	Accept any animals that do not have wings

2. Give **two** other ways in which animals can be classified:

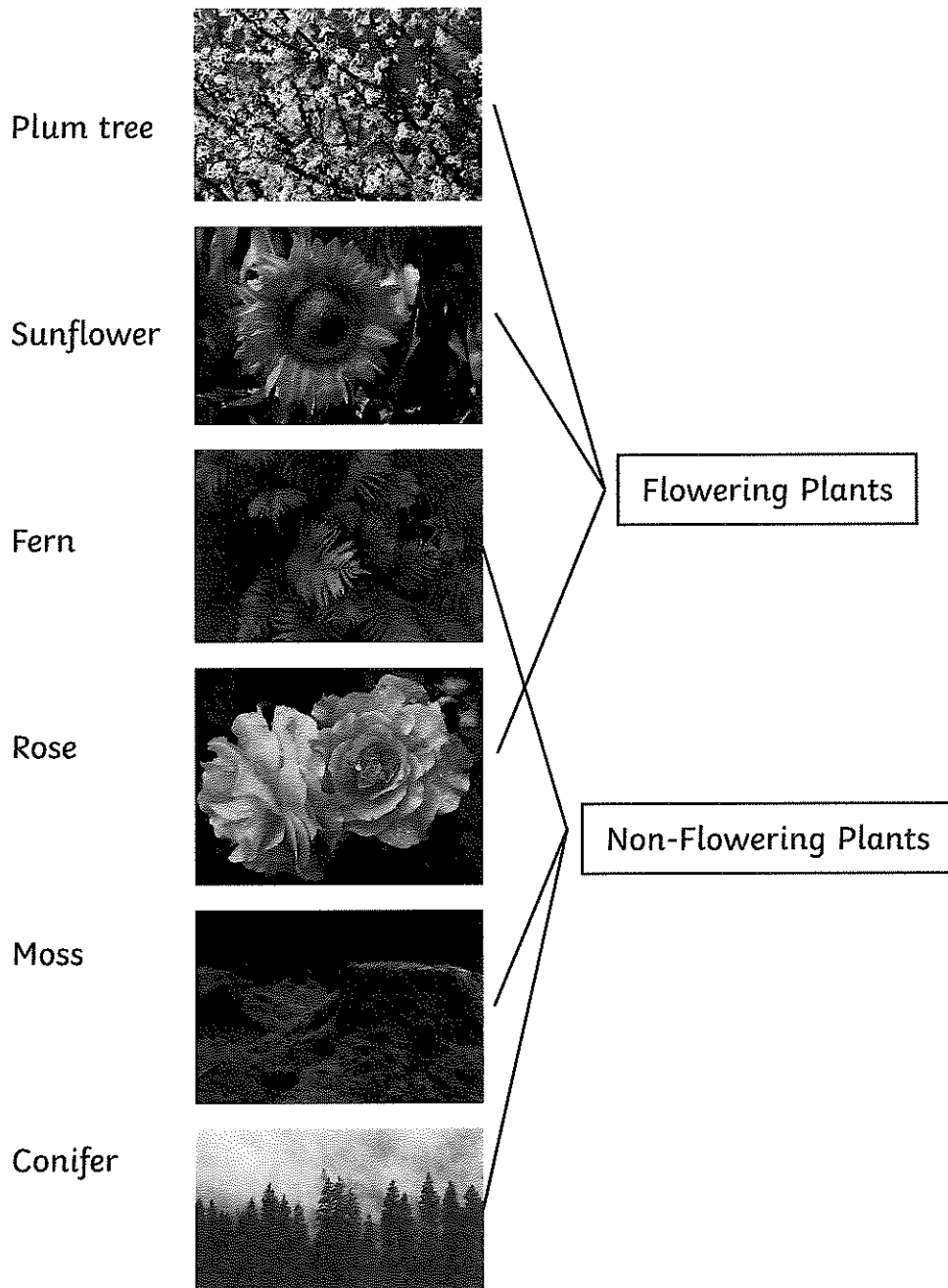
Accept any two groups, e.g.

- lays eggs/gives birth
- insect/not insect
- classes based on number of legs
- classes based on taxonomy categories

3. Sort these animals into the two groups in the table below.

Vertebrates	Invertebrates
frog dolphin lizard	starfish lobster spider jellyfish

4. Draw lines from each plant to the group that it belongs:



Animals, Including Humans

1. What is the main function of the heart?

To pump blood around the body.

2. Circle the parts of the body that make up the circulatory system.

lungs

veins

heart

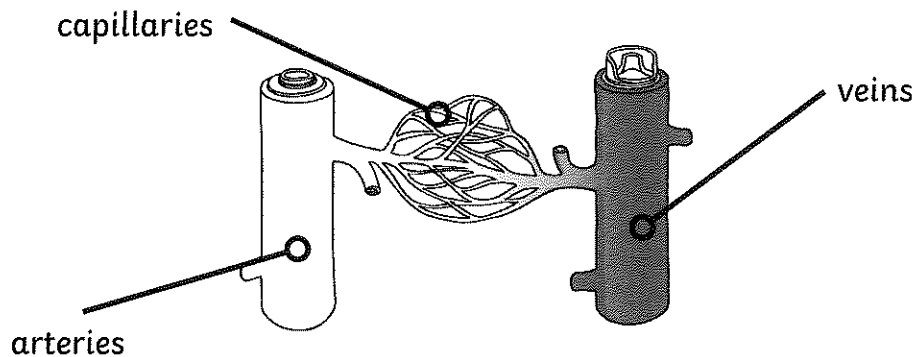
kidneys

arteries

trachea

blood

3. Look at this diagram and complete the sentences below by choosing the correct word in brackets:



Veins carry **de-oxygenated** blood toward the heart.

Arteries carry **oxygenated** blood away from the heart.

Capillaries are the **smallest** blood vessels in the body and it is here that the exchange of water, nutrients, oxygen and carbon dioxide takes place.

4. Which of the following is NOT a benefit of exercise? Put a circle around your answer.

Exercise
strengthens muscles.

Exercise
strengthens bones.

Exercise increases the
amount of oxygen
around the body.



Exercise releases brain
chemicals which
help you feel calm
and relaxed.

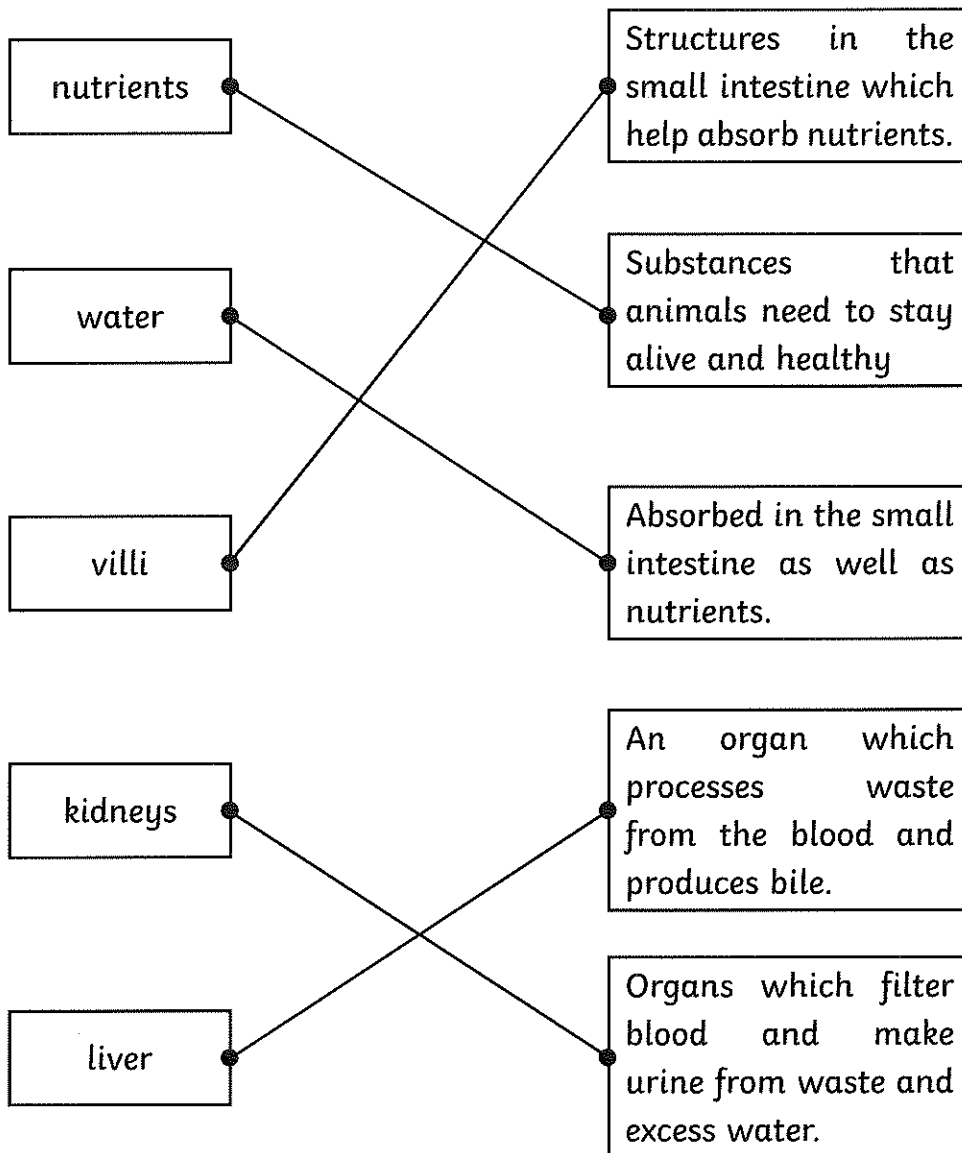
Exercise makes you
grow taller.

5. Name **two** things that have a negative effect on the body.

Accept two of the following:

- **drugs**
- **alcohol**
- **smoking**

6. Draw lines to match the words with their definitions.



1. Fill in the missing words in the passage below using the word bank to help.

Fossils are the preserved remains of ancient animals and plants. Fossils let **scientists** know how plants and animals used to look **millions** of years ago. This is proof that living things have **evolved** over time.

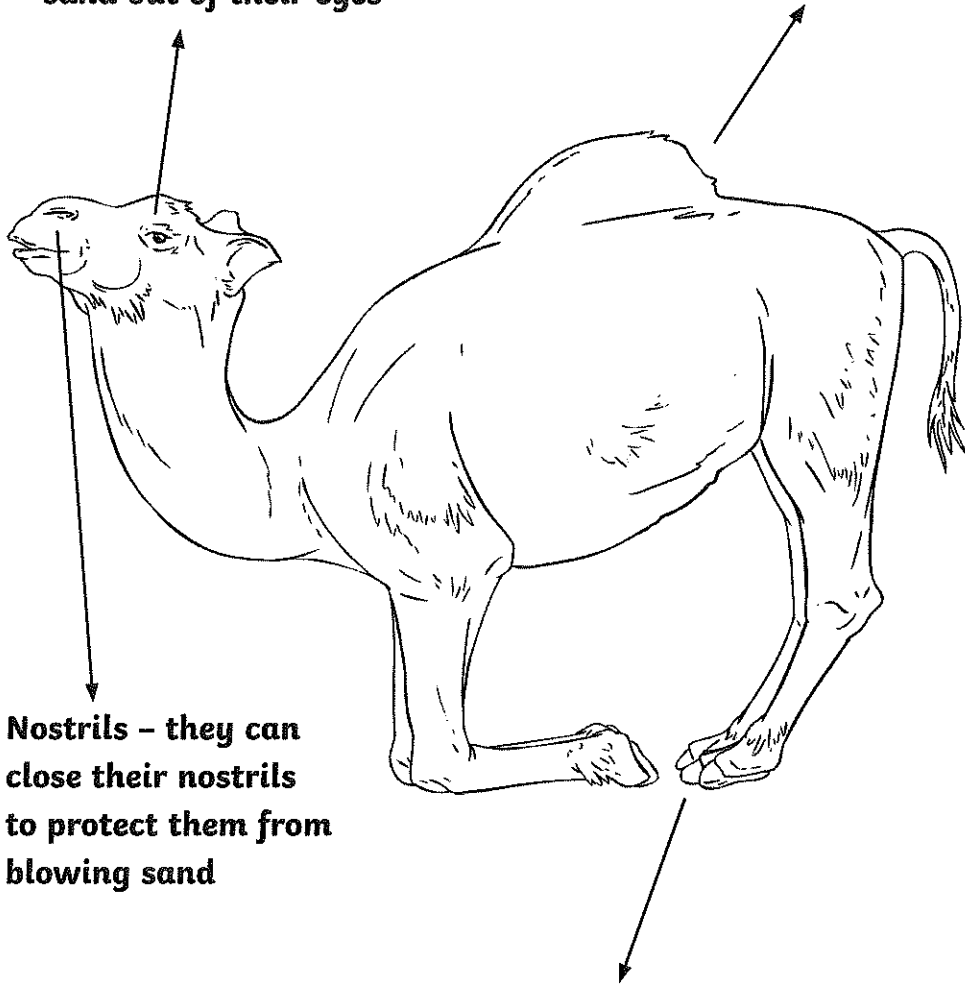
2. True or false?

Inheritance refers to the physical features that are passed from parents to children.	True
Inheritance only occurs in humans.	False
Siblings cannot inherit the same physical features.	False
Eye colour, face shape and hair colour can all be inherited traits.	True

5. Label the camel with ways in which it has adapted to live in the desert.

Eyes – they have long eyelashes to keep the sand out of their eyes

Humps – they can store fat and water to give them energy during long journeys

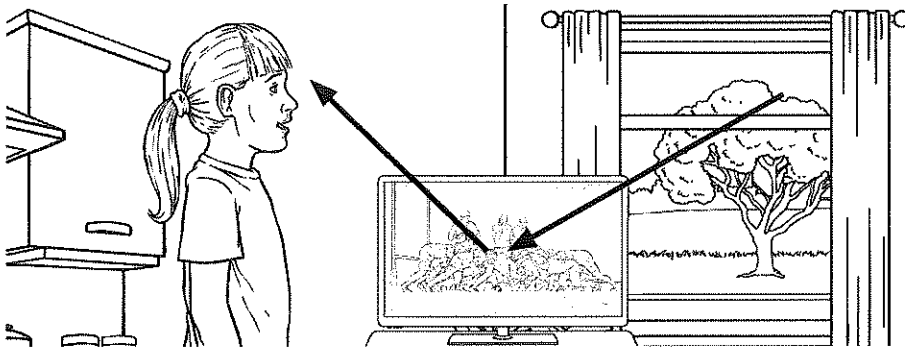


Nostrils – they can close their nostrils to protect them from blowing sand

Feet – they have wide feet for walking in the sand

Light

1. Draw lines on the image below to show how the girl sees the television.



2. Name **two** light sources.

Accept any two light sources, such as:

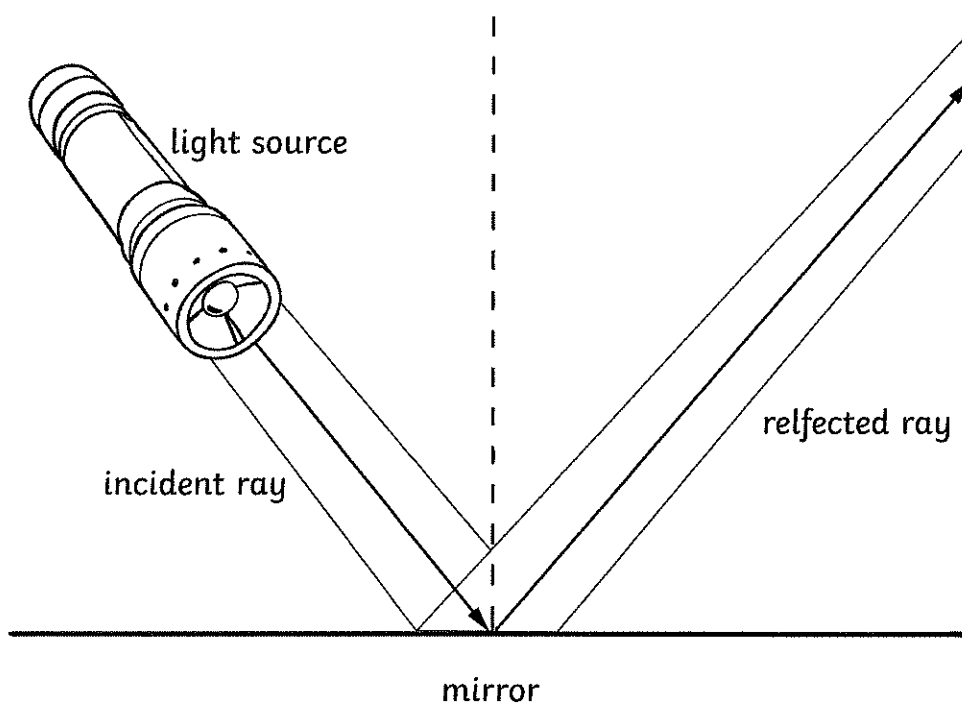
- the sun
- a candle
- a lamp
- a torch

3. True or false?

Light travels in curved lines.	False
When light bounces off a surface, it changes direction.	True
A shadow is formed where light has been blocked.	True
Light cannot travel through a vacuum.	False

4. The law of reflection states that the angle of the incident ray is equal to the angle of the reflected ray.

Label the diagram below with the words in the word bank below to illustrate the law of reflection.





Reading

Year 6 Non-Fiction Mark Scheme

question	answer	marks	notes
1	According to the introduction, how many people in the UK are estimated to be going jogging at least once a week?		
	Six million people	1	Content domain: 2b—retrieve and record information/identify key details from fiction and non-fiction Award 1 mark for the correct answer.
2	Look at the 'Beginner's Guide'. Find and copy the information to complete this table with the correct amounts of time.		
	Gentle warm-up before each activity 5 minutes Start by walking any amount that feels comfortable 10–30 minutes Short running intervals to begin including 1 or 2 minutes Cool down by walking or gently stretching 5–10 minutes	2	Content domain: 2b—retrieve and record information/identify key details from fiction and non-fiction Award 2 marks for all four answers filled out correctly.
3	Look at the sentence: <i>It is always a good idea to build your fitness gradually.</i> What does the word <i>gradually</i> tell you?		
	Gradually means slowly or a little at a time.	1	Content domain: 2a—give/explain the meaning of words in context. Award 1 mark for any answer that shows understanding of the meaning.
4	Look at the section 'Staying Motivated'. Which of these ideas are suggested in the text to help with motivation?		
	Set yourself regular targets Run with a friend or group Run once every week Mix up routes and distances	up to 2 marks	Content domain: 2b—retrieve and record information/identify key details from fiction and non-fiction Award 2 marks for all four options correctly ticked Award 1 mark for 2 or 3 options correctly ticked

5.	What does the guide suggest you might write in a running diary?		
	Award one mark for any of the following <ul style="list-style-type: none"> • route • distance • time • how you felt 	1	<p>Content domain: 2b—retrieve and record information/identify key details from fiction and non-fiction</p> <p>Award 1 mark for a correct answer.</p>
6.	Look at the section ' Different Distances and Types ' Draw lines to match up the headings with the correct explanations.		
	<p>Track Running Over specified distances on an oval running track</p> <p>Road Running Safely on pavements or in events where roads are closed to all vehicle traffic</p> <p>Cross Country Running Over open or rough terrain which may include grass, mud, woodlands, hills or water.</p>	1	<p>Content domain: 2b—retrieve and record information/identify key details from fiction and non-fiction</p> <p>Award 1 mark for lines correctly drawn.</p>
7.	Look at the sentence: ' <i>This could be running safely along pavements.</i> ' Why does the author use the word 'safely' in this section?		
	The section is about 'road running' so the author is trying to keep the runner safe.	1	<p>Content domain: 2d—make inferences from the text /explain and justify inferences with evidence from the text</p> <p>Award 1 mark for any mention of: extra care or caution should be taken when running near roads. More care is needed when running on pavements due to the danger passing traffic and/or pedestrians compared to running on a track or in open terrain.</p>
8.	What is the distance given for a half marathon?		
	13.1 miles	1	<p>Content domain: 2b—retrieve and record information/identify key details from fiction and non-fiction</p> <p>Award 1 mark for the correct answer.</p>
9.	Look at the section ' Specialist Gear and Gadgets ' Explain why a good pair of running shoes are the most important equipment recommended for running?		

	<ul style="list-style-type: none"> Reduce the risk of injury Avoid slipping and sliding that can lead to blisters Reduce amount of shock that travels up your leg 	1	<p>Content domain: 2d—make inferences from the text /explain and justify inferences with evidence from the text</p> <p>Award 1 mark for any correctly given answer.</p>
10.	Identify one other item of equipment that the author suggests for 'as your running advances'.		
	digital sports watch or heart-rate monitor	1	<p>Content domain: 2d—make inferences from the text /explain and justify inferences with evidence from the text</p> <p>Award 1 mark for any correctly given answer.</p> <p>Do not accept technical sports fabric.</p>
11.	Look at the section Running for Kids The author encourages children to 'make your first rule to be running for fun'. What is the purpose of this statement?		
	To help children view running as an enjoyable activity	1	<p>Content domain: 2d—make inferences from the text /explain and justify inferences with evidence from the text</p> <p>Award 1 mark for the correctly ticked box.</p>
12.	Find and copy a word that means providing satisfaction or offering a worthwhile experience.		
	rewarding	1	<p>Content domain: 2a—give/explain the meaning of words in context</p> <p>Award 1 mark for the correct answer.</p>
13.	Based on the whole text, how does the author encourage people to take up running? Give two examples.		

	<ul style="list-style-type: none"> • running is free / doesn't have to cost anything • you can do it almost anywhere • has many potential health benefits (e.g. improve fitness, reduce illness, maintain healthy lifestyle) • exciting challenge • doesn't have to require much equipment • can be rewarding and enjoyable (without any competition) 	up to 2 marks	<p>Content domain: 2c—Summarise main ideas from more than one paragraph</p> <p>Award 1 mark each for any two examples from the listed suggestions.</p>
14	What evidence is there to suggest that this text is aimed at people who are not already regular runners or thinking of trying it for the first time?		
	<ul style="list-style-type: none"> • includes a beginner's guide • 'if you've never been a runner' / 'if you're totally new to running' • provides advice on starting by just walking • gives guidance on equipment required to get started 	1	<p>Content domain: 2d—make inferences from the text / explain and justify inferences with evidence from the text</p> <p>Award 1 mark for any example given.</p>
		Total 17	

Year 6 Poetry Mark Scheme

question	answer	marks	notes
15.	Which three animals are mentioned in the poem?		
	sheep, cows and squirrels	1	Content domain: 2b—retrieve and record information/identify key details from fiction and non-fiction Award 1 mark for the correct answer.
16.	What is the meaning of the word 'boughs'?		
	branches of a tree	1	Content domain: 2a—give/explain the meaning of words in context Award 1 mark for the correctly ticked box
17.	Several lines start with the repeated phrase 'No time'. What is the purpose of repeating these words?		
	To emphasise the author's suggestion of a lack of time /that people are too busy.	1	Content domain: 2g—identify/explain how meaning is enhanced through choice of words and phrases Award 1 mark for the correct answer.
18.	What do you think the author means by 'streams full of stars'?		
	Streams reflecting sunlight in the day / water sparkling with light as it moves or flows The poet is comparing the stream in the daytime to the stars at night.	1	Content domain: 2d—make inferences from the text /explain and justify inferences with evidence from the text Award 1 mark for the correct answer. <i>Do not accept: a reflection of the stars at night as the poem refers to the context of 'broad daylight'.</i>
19.	Find and copy a phrase which could mean 'too occupied with worry'.		
	full of care	1	Content domain: 2a—give/explain the meaning of words in context Award 1 mark for the correct answer.
20.	Look at the line 'No time to turn at Beauty's glance'. Why is a capital letter used for the word 'Beauty'?		
	A capital letter is used for the word 'Beauty' to show personification / the author refers to 'Beauty' as a name or a person / 'Beauty' is the name that the poet is giving to nature	1	Content domain: 2g—identify/explain how meaning is enhanced through choice of words and phrases. Award 1 mark for the correct answer.

21.	Draw lines to match these parts of the poem with their correct movement or actions		
	sheep or cows stand and stare squirrels hide nuts in grass Beauty dance and smile	1	Content domain: 2b—retrieve and record information/identify key details from fiction and non-fiction Award 1 mark for the correctly matched answers
22.	In your own words, explain what message the poet is trying to give the reader.		
	<ul style="list-style-type: none"> • people are too busy • that people should make time to appreciate nature • life is not as good if we do not make time to enjoy the natural surroundings 	up to 3 marks	Content domain: 2f—identify/explain how information / narrative content is related and contributes to meaning as a whole Award one mark each for any comments that refer to answers shown opposite.
23.	The title of the poem is 'Leisure'. How does the word 'leisure' link to the theme of the poem? Use evidence from the text to support your answer.		
	'Leisure' means free time or time spent away from working. The poem refers to views of nature that are usually only appreciated during free time when not at work. The poet suggests we should make more free time or 'leisure' time to appreciate nature.	up to 2 marks	Content domain: 2d—make inferences from the text /explain and justify inferences with evidence from the text Award 1 mark for any answer that links the images of 'leisure' to the need to make leisure time. Award 1 mark for any answer that relates the poem's imagery to events that you may see during 'leisure' time.
		Total 12	



Grammar

Year 6 SPAG mini assessment

1.

Tick whether the underlined conjunction is subordinating or co-ordinating:	Co-ordinating conjunction	Subordinating conjunction
You may go play with your friends, <u>when</u> you have finished your homework.		✓
I like to go to the cinema <u>and</u> I like to eat popcorn.	✓	
I am not going anywhere this weekend, <u>as</u> I am tired.		✓
She wanted to go to the park <u>but</u> it was raining outside.	✓	

Which sentence is a **command**?

Tick **one**.

2. Pack away your paints now.
- You should be proud of your work.
- Will you show me your painting?
- That's your best work yet!

3. Draw a line to match each sentence to the correct **determiner**.
 Use each determiner only **once**.

Sentence	Determiner
At the zoo we saw _____ owl.	a
There was also _____ cute baby penguin.	the
I thought it was _____ best day ever.	an

4. Which punctuation mark completes the sentence below?

What a wonderful present you gave me

Tick one.

full stop

exclamation mark

question mark

comma

5. Underline the **relative clause** in the sentence below.

The child, who was wearing a red t-shirt, was lost in the mall.

6. Add **parenthesis** in the below sentence.

The amazing students (mostly from year six) competed in the art competition.

or commas or dashes in this place

7. Insert **inverted commas** and the appropriate **punctuation** in the below sentence.

"Where are you going?" asked Mr. Dean. *"Where are you going?" Asked Mr. Dean.*

8. Underline the **adverb** in each sentence.

a. Quickly, the boy ran away from the dog.

b. The children wrote their names neatly.

c. Slowly, the car pulled into the garage.

d. I will write my essay tomorrow.

*Adverbs describe how and when the verb takes place.
neatly = how it is done
tomorrow = when it is done.*

9. Which sentence uses standard English? Tick one.

We was reading in silence.

We is reading in silence.

We were reading in silence. ✓

10. Insert the correct **determiners** in the spaces.

Mr. Dave took the book he needed and read it while drinking a cup of tea.
the/a one/a

11. Rewrite the sentence so that it begins with the adverbial phrase. **Remember to use the correct punctuation.**

I received the pupil of the week award, beaming with pride.

Beaming with pride, I received the pupil of the week award.

12. Look at these sentences. Choose who is doing the action- **Kirsty** or **Joe**.

	Kirsty	Joe
Kirsty's apple was eaten by Joe.	<input type="checkbox"/>	<input checked="" type="checkbox"/>
Kirsty passed the notebook to Joe.	<input checked="" type="checkbox"/>	<input type="checkbox"/>
Joe turned off Kirsty's computer.	<input type="checkbox"/>	<input checked="" type="checkbox"/>
Joe's pencil was borrowed by Kirsty.	<input checked="" type="checkbox"/>	<input type="checkbox"/>

13. Choose the word class of each word and write it beside the word.

Adjective, noun, adverb, preposition, pronoun.

Book noun

Their pronoun

Under preposition

Beautiful adjective

Quickly adverb

14. Tick the two sentences where the subject and verb agree. (HINT – which sentences makes sense?)

Many of the boys loves to play with footballs.

There will be a massive crowd of people at the cinema.

Yesterday I completed my homework in less than an hour.

The old woman bake bread every day.

Kittens is running across the floor.

15. Choose whether each sentence is simple, compound or complex.

	Simple	Compound	Complex
Even though it was raining, I went to the park.	<input type="checkbox"/>	<input type="checkbox"/>	<input checked="" type="checkbox"/>
We went to the football match and we really enjoyed it!	<input type="checkbox"/>	<input checked="" type="checkbox"/>	<input type="checkbox"/>
Since the weekend, I am very sleepy.	<input type="checkbox"/>	<input type="checkbox"/>	<input checked="" type="checkbox"/>
I ate my dinner at 5 o'clock.	<input checked="" type="checkbox"/>	<input type="checkbox"/>	<input type="checkbox"/>
West Ham beat Man Utd (2-1) in the game.	<input checked="" type="checkbox"/>	<input type="checkbox"/>	<input type="checkbox"/>

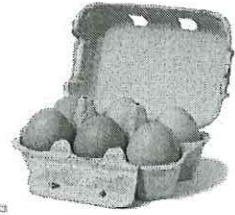
16. Underline the relative clause in the following sentence.

The teacher, who was drinking a cup of coffee, worked hard to mark the books.



Maths

1. If there are 6 eggs in one box. How many egg boxes will there be if you have 552 eggs?



2. What is the lowest common denominator of $\frac{3}{4}$ and $\frac{5}{6}$

12

3.

Fill in the blanks.

- (a) $9 + 8 - 6 + 10 =$
- (b) $5 + 4 \times 7 - 3 =$
- (c) $(20 - 12) \times 4 - 15 =$
- (d) $6 \times 7 - (5 + 9) =$

4.

Multiply and divide.

(a) $176 \times 14 = 2464$ (b) $2468 \times 33 = 81444$

(c) $384 \div 16 = 24$ (d) $3367 \div 29 = 116 \text{ r } 3$

5. Use the symbols

< > =

543 metres > 0.53km
6453 grams < 6.5kg
365 centimetres > 3.6 metres

6. Use the symbols

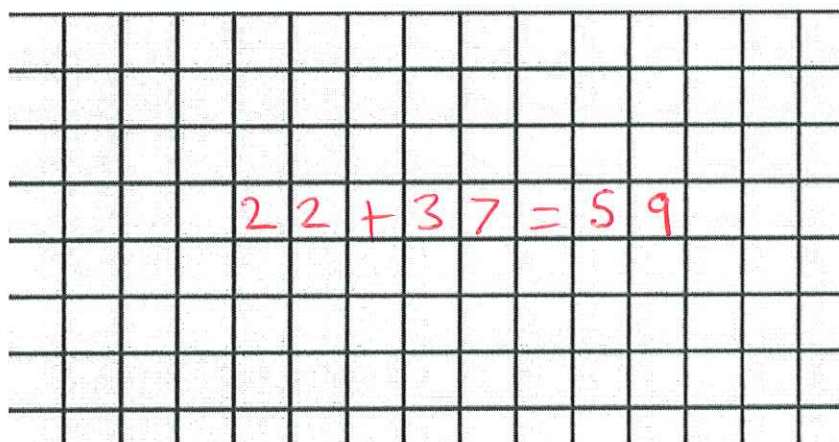
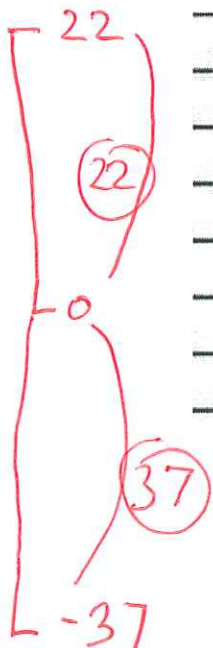
< > =

$\frac{1}{3}$ < 0.4
 $\frac{5}{8}$ < 0.72
 $\frac{5}{10}$ > 0.45

7. The temperature inside an aeroplane is 22 °C.

The temperature outside the aeroplane is -37 °C.

What is the **difference** between these temperatures?



59°

8. _____ x _____ x _____ = 140

eg.

$$1 \times 2 \times 70$$
$$2 \times 3 \times 5 \times 2$$
$$5 \times 4 \times 7$$

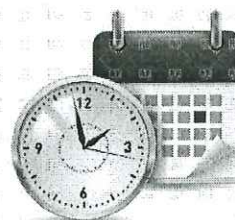
Any 3 numbers
that produce 140
using its factors:
1, 2, 4, 5, 7,
10, 14, 20, 28,
35, 70, 140

11.

A) How many hours are in 3 days?

$$3 \times 24 = 72 \text{ hours}$$

B) How many minutes are in 64 hours?

$$64 \times 60 = 3840$$


9. Round these numbers to the nearest 100.

1253

1300

3558

3600

6489

6500

318546

318600

10. Complete the equation:

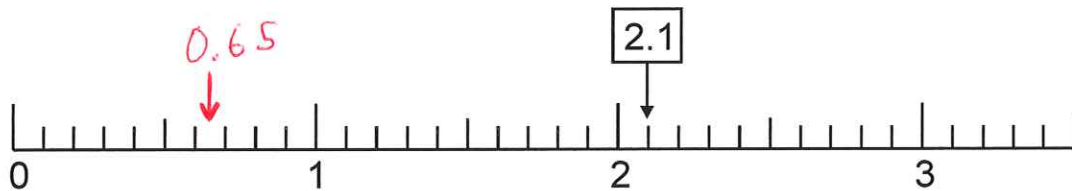
$$123 \times 5 = 2456 -$$

1841

615

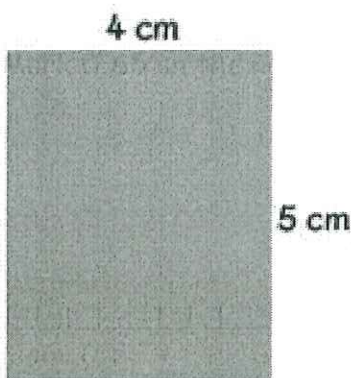
$$\begin{array}{r} 2456 \\ - 615 \\ \hline 1841 \end{array}$$

11. Mark 0.65 on the number line.



12. Find the area and perimeter of each rectangle

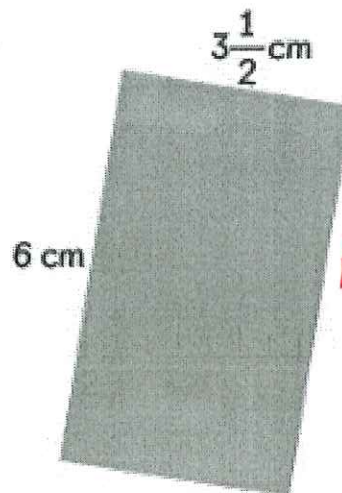
(a)



$$A = 5 \times 4 = 20 \text{ cm}^2$$

$$P = (4+4) + (5+5) = 18 \text{ cm}$$

(b)



$$A = 3.5 \times 6 = 21 \text{ cm}^2$$

$$P = (3.5 + 3.5) + (6 + 6) = 19 \text{ cm}$$